

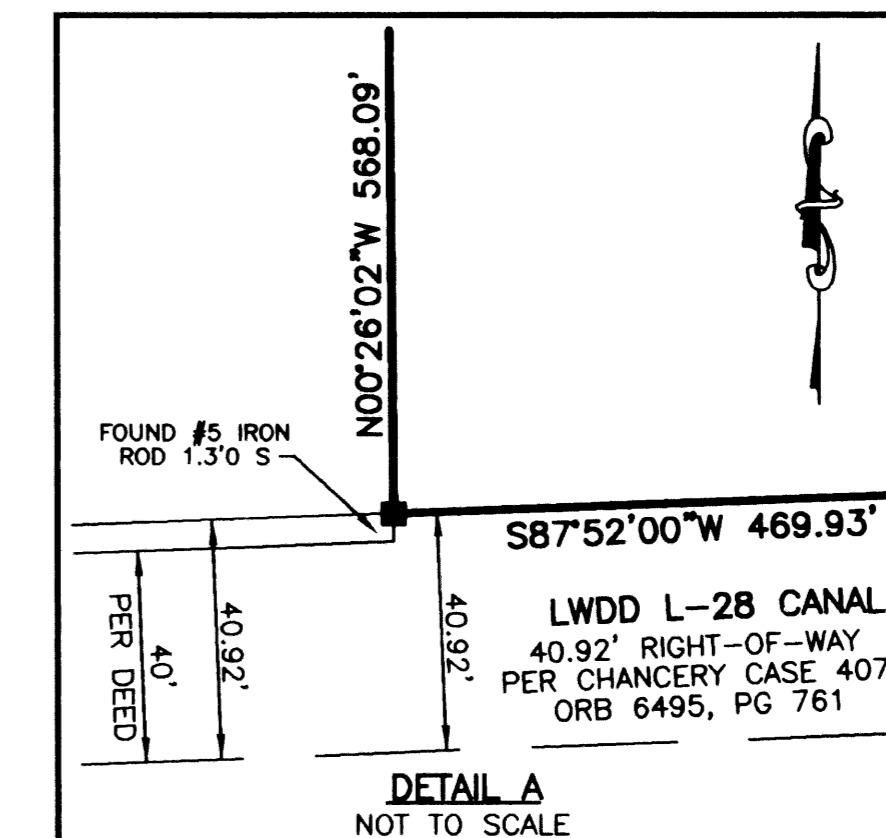
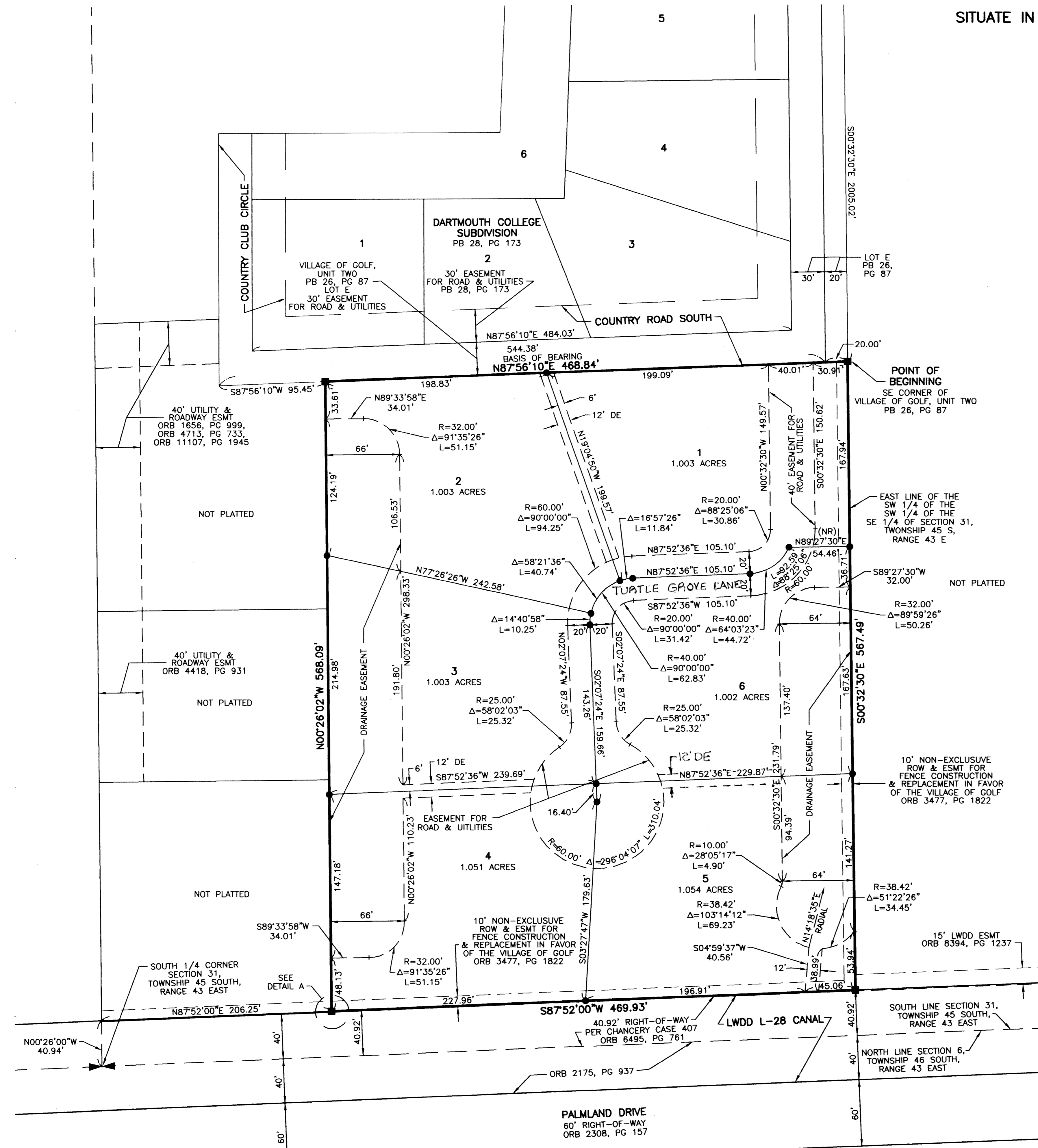
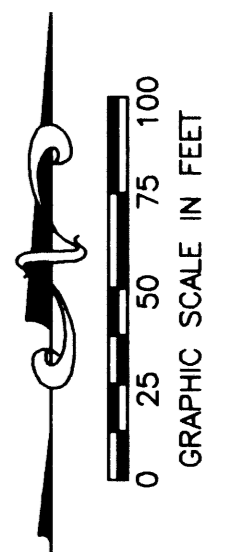
# TURTLE GROVE

SITUATE IN SECTION 31, TOWNSHIP 45 SOUTH, RANGE 43 EAST,  
VILLAGE OF GOLF,  
PALM BEACH COUNTY, FLORIDA  
SHEET 2 OF 2

109

STATE OF FLORIDA  
COUNTY OF PALM BEACH  
THIS PLAT WAS FILED FOR  
RECORD \_\_\_\_\_  
THIS \_\_\_\_\_ DAY OF \_\_\_\_\_  
AD, 2007, AND DULY RECORDED  
IN PLAT BOOK \_\_\_\_\_ ON PAGES  
\_\_\_\_\_ AND \_\_\_\_\_  
DOROTHY H. WILKEN, CLERK  
BY: \_\_\_\_\_, D.C.

CIRCUIT COURT SEAL



- LEGEND**
- Δ CENTRAL (DELTA) ANGLE
  - BE BUFFER EASEMENT
  - DE DRAINAGE EASEMENT
  - ESMT EASEMENT
  - L ARC LENGTH
  - LWDD LAKE WORTH DRAINAGE DISTRICT
  - (NR) NON-RADIAL
  - ORB OFFICIAL RECORD BOOK
  - PB PLAT BOOK
  - PG PAGE
  - R RADIUS
  - ROW RIGHT-OF-WAY
  - PERMANENT REFERENCE MONUMENT SET LB 048 (4"x4" CONCRETE)
  - #5 IRON ROD AND CAP SET LB 048

THIS INSTRUMENT WAS PREPARED BY KEVIN M. BECK, P.S.M. IN THE OFFICES OF MOCK, ROOS & ASSOCIATES, INC., 5720 CORPORATE WAY, WEST PALM BEACH, FLORIDA 33407.

SCALE:  
1" = 50'  
P.A. NO.:  
A3010.00  
DATE:  
JULY 2003  
DRAWING NO.  
45-43-31-101

FLORIDA L.B. NO. 48  
**MOCK • ROOS**  
ENGINEERS - SURVEYORS - PLANNERS  
5720 Corporate Way, West Palm Beach, Florida 33407  
(561) 683-3113, fax 478-7248

**TURTLE GROVE**  
SITUATE IN SECTION 31,  
TOWNSHIP 45 SOUTH, RANGE 41 EAST,  
VILLAGE OF GOLF  
PALM BEACH COUNTY, FLORIDA

SHEET 2 OF 2

S:\blungrov\blungrov.dwg 11/16/2003 2:22:47 PM EST

REV.: 11-03-03  
CAD FILE:  
BLUNGROV\_GROVRP01

CHARTER WORLD  
PB 31, PG 21

PALMLAND DRIVE  
60' RIGHT-OF-WAY  
ORB 2308, PG 157

40.92' RIGHT-OF-WAY  
PER CHANCERY CASE 407  
ORB 6495, PG 761

15' LWDD ESMT  
ORB 8394, PG 1237

10' NON-EXCLUSIVE  
ROW & ESMT FOR  
FENCE CONSTRUCTION  
& REPLACEMENT IN FAVOR  
OF THE VILLAGE OF GOLF  
ORB 3477, PG 1822

EAST LINE OF THE  
SW 1/4 OF THE  
SW 1/4 OF THE  
SE 1/4 OF SECTION 31,  
TOWNSHIP 45 S,  
RANGE 43 E

POINT OF  
BEGINNING  
SE CORNER OF  
VILLAGE OF GOLF, UNIT TWO  
PB 26, PG 87